

### III. Osseodensification May Facilitate Lateral Ridge Expansion

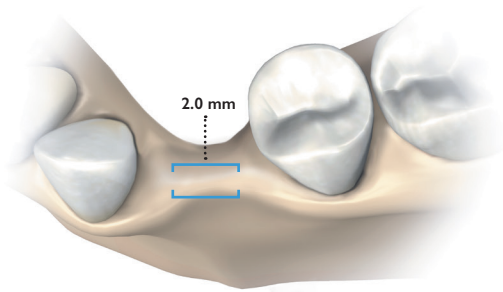
#### C. Guided Expansion Graft: 2-Stage Approach

Indicated for cases with **less than 3.0 mm** ridge width.

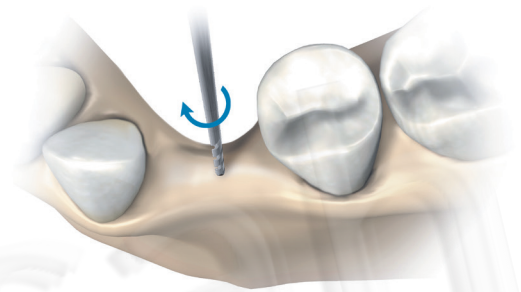
1. Flap the soft tissue using the technique indicated for the implant position.
2. Drill to the desired depth using the Pilot Drill (*Drill speed 800-1500 rpm with copious irrigation*).
3. Begin with the narrowest Densah® Bur. **Set the drill motor to reverse–Densifying mode** (*Counterclockwise drill speed 800-1500 rpm with copious irrigation*). Begin running the bur into the osteotomy. When feeling the haptic feedback of the bur pushing up out of the osteotomy, **repeatedly lift off and reapply pressure with a pumping motion** until reaching the desired depth.
4. Increase osteotomy diameter in small increments until reaching a final width of 3.5 – 4.0 mm. As the bur diameter increases, the bone will slowly expand to the final diameter. To view the video, visit us on the web at [www.versah.com/geg](http://www.versah.com/geg).
5. Graft newly formed socket with your preferred bone allograft materials, use membrane if needed and achieve primary closer.



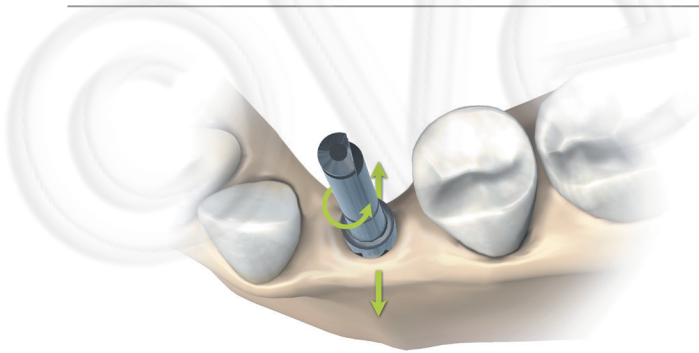
Scan this QR Code  
to view our Guided  
Expansion Graft  
Procedure video



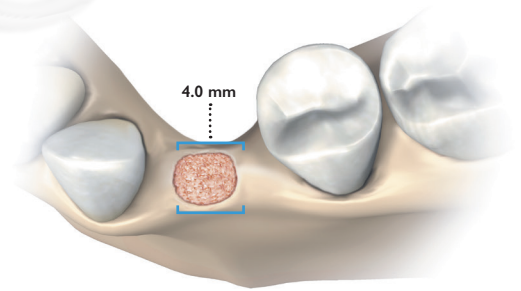
1.



2.



3.



4.

\*Clinician experience and judgement should be used in conjunction with the Densah® Reference Guide recommendation and suggested use protocols.