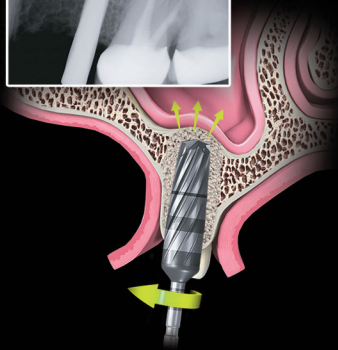
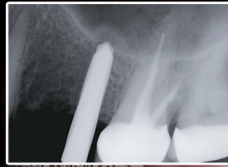
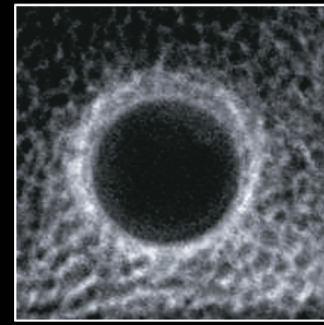


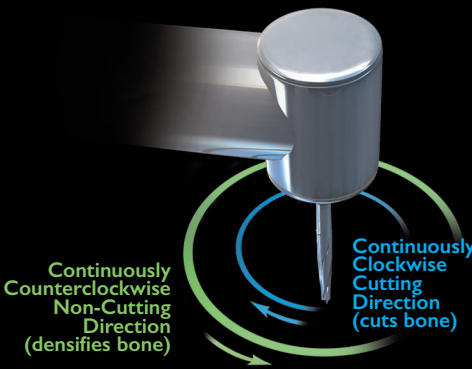
Densah® Bur Versatility



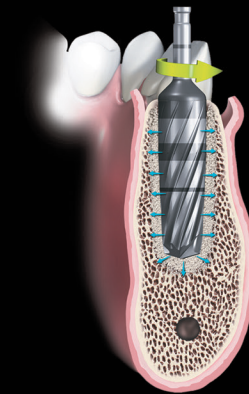
**Gently Autograft
the Maxillary Sinus**



**Eliminate the Guessing Game
of Implant Primary Stability**



**Densahfy Or Cut
With the Push of a Button**



**Efficiently Expand
any Ridge in Either Jaw**

Densah® Burs are based on a novel osteotomy preparation technique we call “osseodensification.” Osseodensification is a non-excavating implant site preparation technique that is highly controllable and efficient. The benefit of osseodensification is in its clinical versatility. It enhances implant stability while allowing for Ridge Expansion and Maxillary Sinus Autografting.

Unlike traditional bone drilling, osseodensification does not excavate bone tissue. Rather, bone tissue is simultaneously compacted and auto-grafted with minimal trauma as the osteotomy is rapidly formed. Densah® Burs use advanced, patent-pending technology to prepare an implant site using either a Densifying Mode or a Cutting Mode. In the Densifying Mode, the Bur is rotated in a high speed non-cutting counterclockwise (CCW) direction (osseodensification). In the Cutting Mode, the Bur is rotated in a clockwise (CW) direction to precisely cut bone if needed. In the Densifying Mode, the Densah® Bur preserves

and densifies bone. This supplements the basic bone compression effect, creating a densified crust along the entire depth of the osteotomy. The result is a consistently densified osteotomy. Consistent osteotomies and densification are important to increase insertion torque and enhance implant primary stability, which may facilitate early loading.

Each Densah® Bur features multiple, precision-ground flutes within a tapered geometry designed to produce a fast feed rate with minimal heat elevation. The taper design allows the surgeon to constantly modulate pressure and regulate irrigation. The flutes are tipped with a proprietary chisel edge that concentrates thrust force while reducing tool chatter to produce smooth haptic feedback that intuitively allows the surgeon to make adjustments. A Densah® Bur kit contains Densah® Burs of progressively larger diameter, which are to be used sequentially to achieve the desired osteotomy size. Densah® Burs can be used with all standard engines and implants.