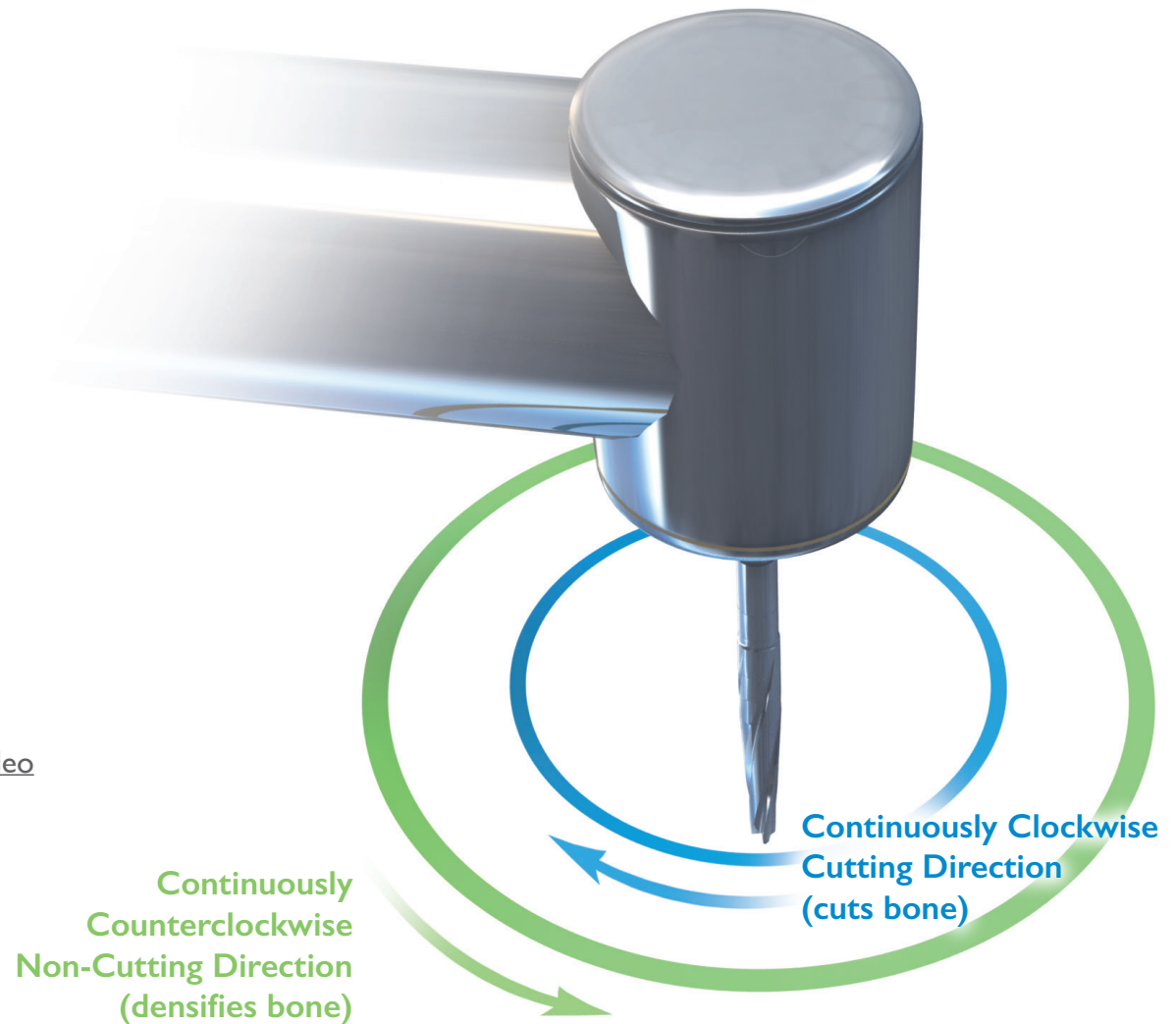




### III. Versatile Utilization

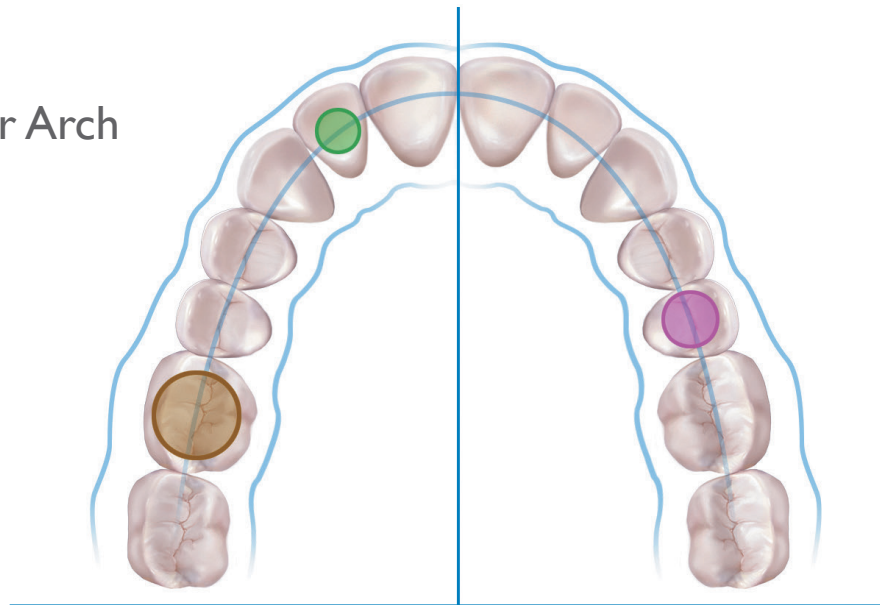
Densah® Burs can be used in both Cutting and Densifying modes within the same procedure. You can move between multiple osteotomy sites in a patient — cutting in one site and densifying in another — using the same Densah® Bur. In hard bone, the same Densah® Bur can be used to densify — cut — densify again within the same osteotomy **(Densify After Cut Protocol).**

Click link to view video: [www.versah.com/dac-video](http://www.versah.com/dac-video)

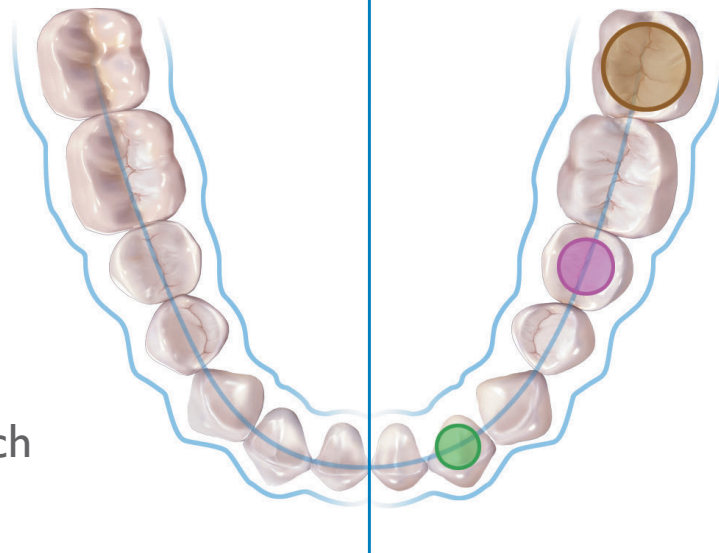


With a push of the reverse button of your implant drill console

Upper Arch



Lower Arch



- Osteotomy Site 1
- Osteotomy Site 2
- Osteotomy Site 3



Densify				
Cut				
Cut				

NOTE: Surgeon preference overrides this suggestive protocol