

Osseodensification

Versah® C-Guide® System Protocol



Versah®
Guided Surgery Protocol

Overview: Versah® Guided Surgery System is an innovative universal system that allows for adequate irrigation, proper visualization of the osteotomy preparation and expansion, with full ability to luxate with the Densah® Bur. It facilitates the management of multiple sites with different site preparation depths and diameters with precision.

Step 1:

Imaging: Obtain a CBCT scan and digital impressions of patients designated jaw(s).
(figure 1)

Figure 1

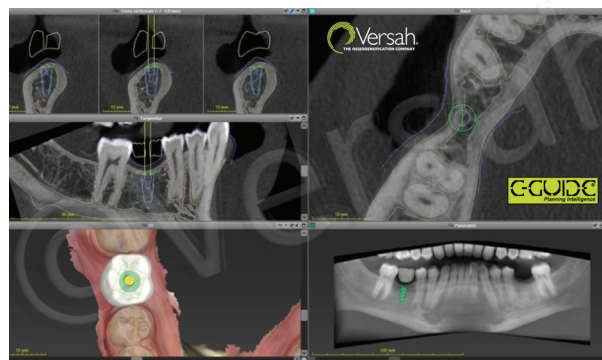


Figure 2



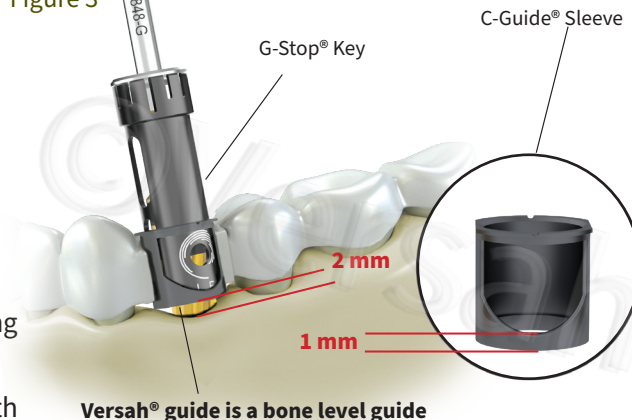
Step 2:

Treatment Planning: Utilize the C-Guide® Planning Intelligence Software or other universal planning software to plan the case with the C-Guide® components. If you are working with a Versah® certified lab, you may send the lab the CBCT scan and clinical impressions. For a list of all Versah certified labs please visit: versah.com/guided-surgery-system/

Step 3:

Determine the final implant diameter, depth, and angulation, C-Guide® Sleeve placement, and drilling sequence with the needed Densah® Burs.
(figure 3) **Make sure the surgical guide base sits maximum 2 mm coronal of the alveolar bone crestal level.**

Figure 3



Step 4:

Select the appropriate G-Stop® (S-M-L-XL) according to implant diameter and treatment plan.
(figure 2) showing Guided Densah® Bur with appropriate large vertical stop and matching large C-Guide Sleeve.

Step 5:

Follow the suggested specific Implant System Drilling Protocol (<https://versah.com/implant-system-drilling-protocols/>): Use the G-Stop® Keys in incremental depth steps, example: start with the G-Stop® Key (5 mm) to mark your osteotomy and establish initial hole trajectory at 2mm depth (5mm-3mm offset) as in (figure 3). Exchange (5 mm) stop with the next appropriate stop length to achieve the full planned desired depth. Go in incremental depth steps (do not skip more than one stop-depth for maximum accuracy) leading up to your final length (figure 4). Repeat with wider Densah® Bur. Your G-Stop® Key size must align with your C-Guide® size.

C-Guide®
Sleeve



1. Guentsch A, An H, & Dentino AR. Precision and trueness of computer-assisted implant placement using static surgical guides with open and closed sleeves: An in vitro analysis. *Clinical Oral Implants Research* 2022; 33: 441-440

2. Guentsch A, Bjork J, Saxe R, Han S, Dentino AR. An in-vitro analysis of the accuracy of different guided surgery systems – They are not all the same. *Clin Oral Implants Res* 2023; 34: 531-541

Figure 4



Example (Final length desired 13 mm):

- Tapered Pilot Drill use:
 - (5 mm key then 10 mm, 13 mm)
- VT1525 use:
 - (5 mm key then 10 mm, 13 mm)
- VT2535 use:
 - (5 mm key then 10 mm, 13 mm)

Sizing the Versah® Guided Surgery System

Scan for more information

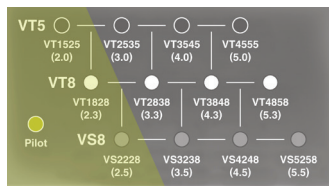


Available Sizes

S

Placement up to 3.25 mm Implant

Densah® Bur Compatibility



G-Stop® Key

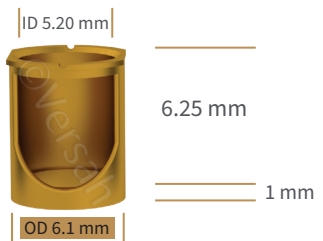
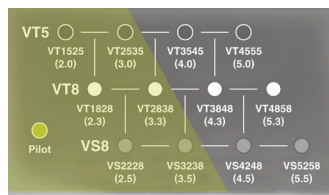


C-Guide® Sleeve



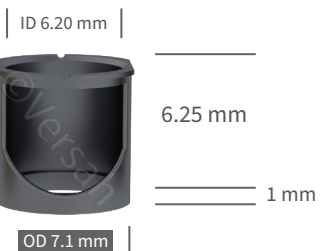
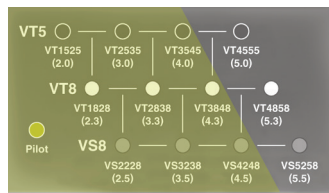
M

Placement up to 4.3 mm Implant



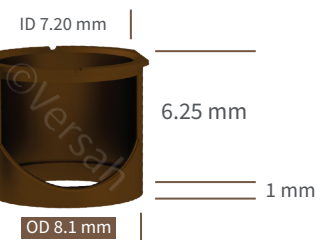
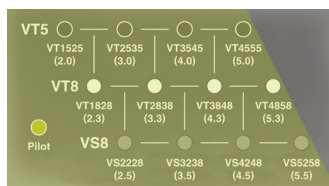
L

Placement up to 5.3 mm Implant



XL

Placement up to 6.2 mm Implant



* Data on file, visit versah.com/our-science/ for Guided Surgery studies

Clinician judgement and experience should be applied in conjunction with this clinical practice suggestive use protocol